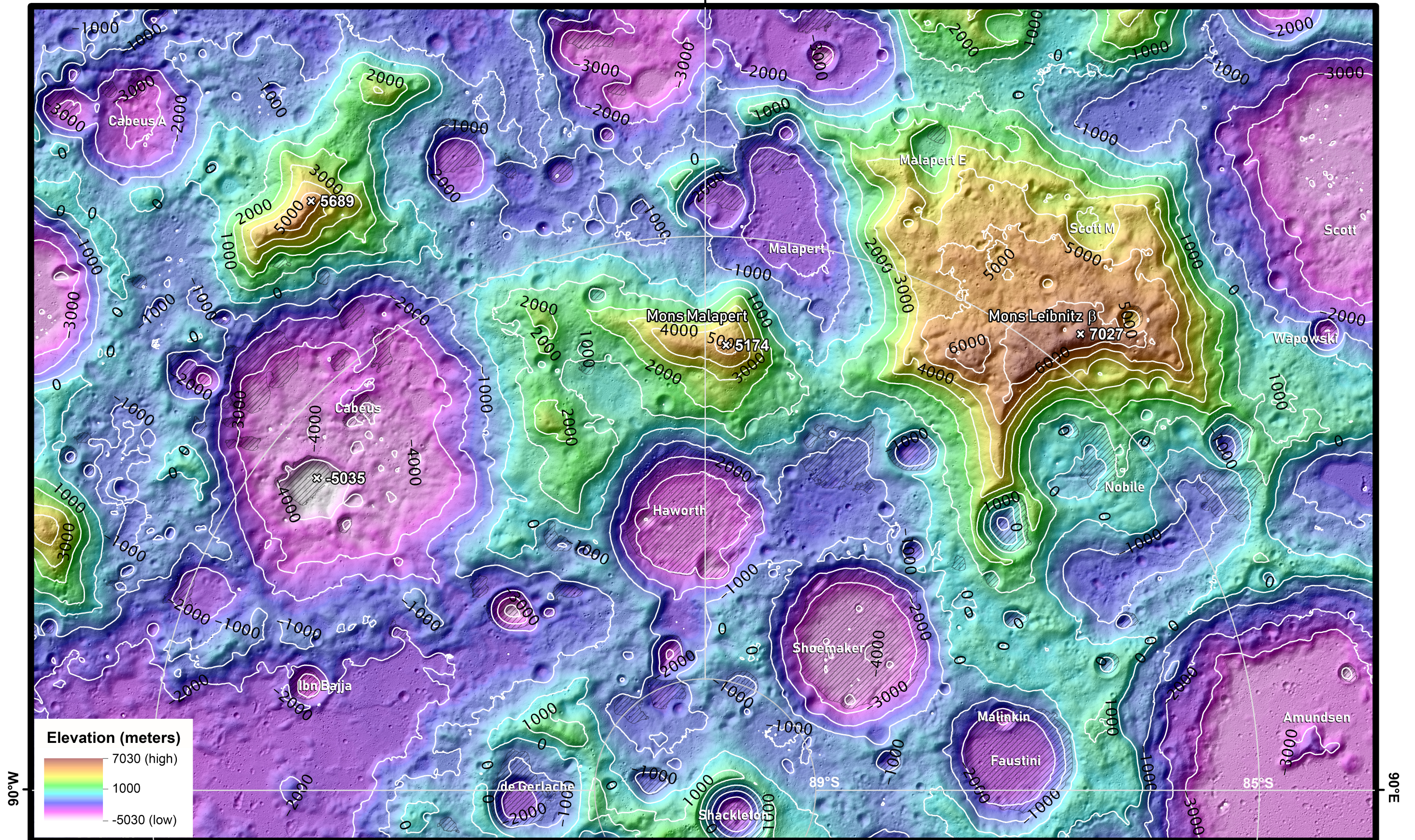


# Topography and Permanently Shaded Regions (PSRs) of the Moon's South Polar Nearside

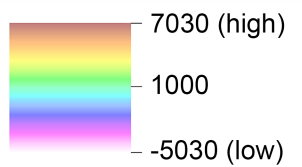
Polarstereographic Projection (scale true at pole)

Scale: 1:1,000,000

0°E



Elevation (meters)



90°W

90°E



**Regional Planetary Image Facility**  
Lunar and Planetary Institute, Houston, Texas, USA  
LPI Contribution No. 2625, June 2021

**Data sources:** Lunar Reconnaissance Orbiter Lunar Orbiter Laser Altimeter (LOLA) 20-m elevation product with 1000-m contours relative to global radius (white lines and black numbers) [NASA Goddard Space Flight Center (GSFC)] over derived hillshade with solar azimuth 45°W and solar elevation 45°; shapefile of digitized LOLA large PSRs (black hatched areas) [NASA GSFC; Arizona State University].