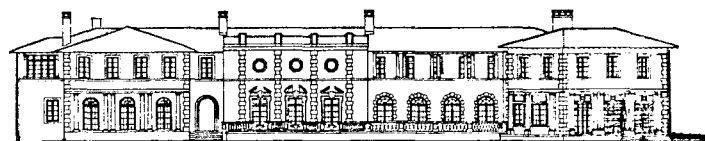


LUNAR AND PLANETARY SCIENCE

INFORMATION RESOURCES

LUNAR SCIENCE INSTITUTE
DATA CENTER
3303 NASA ROAD #1
HOUSTON, TX 77058
U.S.A.



SEPTEMBER 1976
2d edition

The Lunar Science Institute is operated by the Universities Space Research Association under Contract No. NSR 09-051-001 with the National Aeronautics and Space Administration.

Compiled by: Frances B. Waranius, Librarian
Mary Ann Hager, Photo/Map Librarian

This document constitutes LSI Contribution No. 260

CONTENTS

	Page
Abbreviations and Ordering Information	4
Apollo Mission Documents	5
Conference Publications	14
Lunar and Planetary Publications	17
Selected Current Book-List	22
U.S. Geological Survey Atlas of the Moon	23
U.S. Geological Survey Atlas of Mars	24

ABBREVIATIONS AND ORDERING INFORMATION

Denoyer -	Denoyer - Geppert 5235 Ravenswood Avenue Chicago, IL 60640	requires purchase order or prepayment by check or money order
GPO -	Assistant Government Printer Government Printing Office Washington, DC 20402	requires prepayment by check, money order or deposit account
LSI -	Lunar Science Institute Data Center 3303 NASA Road 1 Houston, TX 77058	all materials are available on loan from the Data Center to qualified investigators
NASA/SL -	NASA/Headquarters Lunar & Planetary Programs Code: SL Washington, DC 20546	contact NASA/SL for cost and availability information
NATL GEO -	National Geographic Society 17th and M Street, NW Washington, DC 20036	requires purchase order or prepayment by check or money order
NSSDC -	National Space Science Data Center Code 601.4 Goddard Space Flight Center Greenbelt, MD 20771	Materials are available at little or no cost to scientists or educators when used for professional purposes
NTIS -	National Technical Information Service 5825 Port Royal Road Springfield, VA 22161	requires prepayment by check, money order, deposit account or American Express credit card
PIC -	Photographic Illustration Co. 2220 Magnolia Boulevard Burbank, CA 91506	requires prepayment by check or money order
PP -	Pergamon Press Maxwell House Fairview Park Elmsford, NY 10523	
USGS -	U. S. Geological Survey Branch of Distribution 1200 South Eads Street Arlington, VA 22202	requires prepayment by check, money order, or deposit account

(all prices and availability are subject to change without notice)

APOLLO MISSION DOCUMENTS

This list of documents is arranged by Apollo mission number, subdivided into the categories: General Information, Geology and Sample Information, Maps, and Photography. Copies of all the publications listed here are available on loan to qualified requestors from the LSI Data Center.

	<u>Source</u>	<u>Order No.</u>	<u>Media</u>	<u>Price</u>
<u>APOLLO 8</u>				
<u>Photography</u>				
Analysis of Apollo 8 photography and visual observations. 1969. NASA SP-201. 403 pp.	GPO NTIS	NAS1.21:201 N70-14366	Original Photocopy Microfiche	\$ 4.25 10.50 2.25
Apollo 8 lunar photography, index maps. 1969. NSSDC. 4 sheets.	NSSDC	69-06; attach. #1		*
Apollo 8 lunar photography, 70-mm frame index. 1969. NSSDC. 35 pp.	NSSDC	69-06; attach. #2	Microform	*
<u>APOLLO 10</u>				
<u>Photography</u>				
Analysis of Apollo 10 photography and visual observations. 1971. NASA SP-232. 231 pp.	GPO NTIS	NAS1.21:232 N71-27871	Original Photocopy Microfiche	\$ 4.25 7.50 2.25
Apollo 10 lunar photography, index maps. 1969. NSSDC. 6 sheets.	NSSDC	69-14, attach.		*
Apollo 10 photography index, 70mm index. 1969. NSSDC. 124 pp.	NSSDC	69-14, attach. #2	Microform	*
<u>APOLLO 11</u>				
<u>General Information</u>				
Apollo 11 Mission Report. 1971. NASA SP-238. 228 pp.	NTIS	N71-25042	Photocopy Microfiche	\$ 7.50 2.25
Apollo 11 Preliminary Science Report. 1969. NASA SP-214. 209 pp.	NTIS	N70-10030	Photocopy Microfiche	7.25 2.25
<u>Geology and Sample</u>				
Bailey, N.G., Ulrich, G.E., "Apollo 11 voice transcript pertaining to the geology of the landing site." 1974. USGS. 45 pp.	NTIS	PB235988/3GA	Photocopy Microfiche	\$ 3.75 2.25
Lunar Sample Information Catalog, Apollo 11. Aug. 31, 1969. NASA/Manned Spacecraft Center. 412 pp.	NSSDC		Microform	*
<u>Maps</u>				
Golier, M.J., "Geologic map of Apollo landing site #2 [Apollo 11]. 1970. USGS. 1 sheet and description	USGS	I-619		\$ 1.00

*For availability and price information, contact NSSDC

	<u>Source</u>	<u>Order No.</u>	<u>Media</u>	<u>Price</u>
<u>APOLLO 11 MISSION (continued)</u>				
<u>Photography</u>				
Data users' note; Apollo 11 lunar photography. 1970. NSSDC. 20 pp.	NSSDC	70-06		*
Apollo 11 photography; 70mm, 16mm, and 35mm frame index. 1970. NSSDC. 129 pp.	NSSDC	70-02	Microform	*
Apollo 11 70mm photographic catalog. 1970. NSSDC. 300 pp.	NSSDC	70-07	Microform	*
Apollo 11 mission photography indexes. 1969. NSSDC. 4 sheets.	NSSDC	Order by title		*
<u>APOLLO 12 MISSION</u>				
<u>General Information</u>				
Apollo 12 Preliminary Science Report. 1970. NASA SP-235. 235 pp.	NTIS	N70-35271	Photocopy Microfiche	\$7.50 2.25
Analysis of Surveyor 3 material and photographs returned by Apollo 12. 1972. NASA SP-284. 302 pp.	GPO	NAS1.21:284	Original	4.00
	NTIS	N72-26731	Photocopy	9.25
			Microfiche	2.25
<u>Geology and Sample</u>				
Bailey, N.G., Ulrich, G.E., "Apollo 12 voice transcript pertaining to the geology of the landing site." 1975. USGS. 178 pp.	NTIS	PB241811/9GA	Photocopy Microfiche	\$7.00 2.25
Lindsay, J.F., et al., "Description of core samples returned by Apollo 12." Nov. 1971. NASA/Manned Spacecraft Center. 22 pp. (NASA TM X-58066)	NTIS	N72-15745	Photocopy	3.25
			Microfiche	2.25
Warner, J., comp. "Apollo 12 Lunar Sample Information Catalog." June 1970. NASA/Manned Spacecraft Center. 377 pp. (MSC S-243 or NASA TR R-353)	NTIS	N71-13742	Photocopy Microfiche	10.25 2.25
<u>Maps</u>				
Pohn, H.A., "Geologic map of the Lansberg P region of the Moon." [Apollo 12]. 1971. USGS. 1 sheet and description.	USGS	I-627		\$1.00
<u>Photography</u>				
Data users' note; Apollo 12 lunar photography. 1970. NSSDC. 25 pp.	NSSDC	70-09		*
Apollo 12 photography; 70mm, 16mm, and 35mm frame index. 1970. NSSDC. 149 pp.	NSSDC	70-11	Microform	*

*For availability and price information, contact NSSDC

	<u>Source</u>	<u>Order No.</u>	<u>Media</u>	<u>Price</u>
<u>APOLLO 12 MISSION (continued)</u>				
<u>Photography (continued)</u>				
Apollo 12 70mm photographic catalog. 1970. NSSDC. 300 pp.	NSSDC	70-10	Microform	*
Apollo mission 12 lunar photography index. 1970. NSSDC. 4 map sheets	NSSDC	Order by title		*
<u>APOLLO 13 MISSION</u>				
<u>Photography</u>				
Data users' note; Apollo 13 lunar photog- raphy. 1970. NSSDC. 23 pp.	NSSDC	70-18, part 1		*
Apollo 13 photography; 70mm and 16mm frame index. 1970. NSSDC. 61 pp.	NSSDC	70-18, part 2	Microform	*
Apollo 13 photographic catalog. 1970. NSSDC. 50 pp.	NSSDC	70-18, part 3	Microform	*
Apollo mission 13 lunar photography index. 1970. NSSDC. 1 map sheet	NSSDC	Order by title		*
<u>APOLLO 14 MISSION</u>				
<u>General Information</u>				
Apollo 14 Preliminary Science Report. 1971. NASA SP-272. 313 pp.	GPO NTIS	NAS1.21:272 N71-30953	Original Photocopy Microfiche	\$3.00 9.25 2.25
<u>Geology and Sample</u>				
Apollo 14 Lunar sample information catalog. Sept. 1971. NASA/Manned Spacecraft Center. 184 pp. (NASA TM X-58062)	NSSDC		Microform	*
Bailey, N.G., Ulrich, G.E., "Apollo 14 voice transcript pertaining to the Geology of the landing site." 1975. 150 pp.	NTIS	PB242056/OGA	Photocopy Microfiche	5.75 2.25
Fryxell, R., Heiken, G., "Description, dissecton and subsampling of Apollo 14 core sample 14230." Oct. 1971. NASA/Manned Spacecraft Center. (NASA TM X-58070). 16 pp.	NTIS	N72-12830	Photocopy Microfiche	\$3.25 2.25
Sutton, R.L., et al., "Documentation of the Apollo 14 samples." May 1971. USGS. 37 pp. (Astrogeology 28)	Loan Only - LSI Data Center			

*For availability and price information, contact NSSDC

	Source	Order No.	Media	Price
<u>APOLLO 14 MISSION (continued)</u>				
<u>Geology and Sample Information (continued)</u>				
Swann, G.A., et al., "Preliminary geologic investigations of the Apollo 14 landing site." March 1971. USGS. 124 pp. (Astrogeology 29)				
<u>Maps</u>				
Eggleton, R.E. and Offield, T.W., Geologic maps of the Fra Mauro region of the Moon. 1970. USGS. 1 sheet plus description.	USGS	I-708		\$1.00
<u>Photography</u>				
Data users' note; Apollo 14 lunar photog- raphy. 1971. NSSDC. 25 pp.	NSSDC	71-16a		*
Apollo 14 photography; 70mm, 35mm, 16mm, and 5 in. frame index. 1971. NSSDC. 139 pp.	NSSDC	71-16b	microform	*
Apollo 14 photographic catalog. 1971. NSSDC. 375 pp.	NSSDC	71-16c	microform	*
Apollo mission 14 lunar photography index. 1971. NSSDC. 3 map sheets	NSSDC	Order by title		*
<u>APOLLO 15 MISSION</u>				
<u>General Information</u>				
Apollo 15 Preliminary Science Report. 1972. NASA SP-289. 502 pp.	GPO NTIS	NAS1.21:289 N72-22814	Original Photocopy Microfiche	\$ 8.00 12.25 2.25
<u>Geology and Sample</u>				
Apollo 15 samples; abstracts of papers submitted to the Apollo 15 Investi- gator's Conference, Houston, TX. 1971. LSI. 525 pp.	LSI	Apollo 15	Paper copy	\$ 1.00 US 6.00 For
Bailey, N.G., Ulrich, G.E., "Apollo 15 voice transcript pertaining to the geology of the landing site." 1975. USGS. 232 pp.	NTIS	PB242990/AS	Photocopy Microfiche	7.50 2.25
Apollo Lunar Geology Investigation Team, "Preliminary report on the geology and field petrology at the Apollo 15 landing site." 1971. USGS. 31 pp. (Astrogeology 32)	NTIS	N71-33233	Photocopy Microfiche	3.75 2.25
Heiken, G.H., et al., "Stratigraphy of the Apollo 15 drill core." Nov. 1972. NASA/Manned Spacecraft Center. 21 pp. (NASA TM X-58101 or MSC 07603)	NTIS	N73-14839	Photocopy Microfiche	\$ 3.25 2.25

*For availability and price information, contact NSSDC

	Source	Order No.	Media	Price
<u>APOLLO 15 MISSION (continued)</u>				
<u>Geology and Sample Information (continued)</u>				
Lunar sample information catalog, Apollo 15. Nov. 1971. NASA/Manned Spacecraft Center. 323 pp. (MSC 03209)	NSSDC		Microform	*
Powell, B.N., "Apollo 15 coarse fines (4-10mm); sample classification, description and inventory." Feb. 1972. NASA/Manned Spacecraft Center. 95 pp. (MSC 03228)		Loan only - LSI Data Center		
Sutton, R.L., et al. "Documentation of Apollo 15 samples. April 1972. USGS. 265 pp. (Astrogeology 47. Supercedes Astrogeology 34)	NTIS	N72-28823	Photocopy Microfiche	8.50 2.25
Swann, G.A., et al., "Preliminary description of Apollo 15 sample environments." Sept. 1971. USGS. 219 pp. (Astrogeology 36)	NTIS	N72-13768	Photocopy Microfiche	7.25 2.25
<u>Maps</u>				
Apollo 15 traverses; lunar photomap. Scale 1:25,000. 1975	NASA/SL	Sheet 41B4S4(25) edition 2		
Carr, M.H., et al., "Geologic maps of the Apennine-Hadley region of the Moon. 1971. USGS. 1 sheet and description.	USGS	I-723		\$1.00
<u>Photography</u>				
Data users' note; Apollo 15 lunar photography. 1972. NSSDC. 65 pp.	NSSDC	72-07		*
Apollo 15 photography; 70mm, 35mm, 16mm, and 5 in. frame index. 1972. NSSDC.	NSSDC	Order by title	Microform	*
Apollo 15 panoramic and metric photography index. 1972. NSSDC.	NSSDC	Order by title	Microform	*
Apollo mission 15 lunar photography index. 1972. NSSDC. 10 map sheets.	NSSDC	Order by title		*
<u>APOLLO 16 MISSION</u>				
<u>General Information</u>				
Apollo 16 Preliminary Science Report. 1972. NASA SP-315. 636 pp.	GPO NTIS	NAS1.21:315 N73-21729	Original Photocopy Microfiche	\$10.25 15.25 2.25

*For availability and price information, contact NSSDC

	Source	Order No.	Media	Price
<u>APOLLO 16 MISSION (continued)</u>				
<u>Geology and Sample</u>				
Apollo Lunar Geology Investigation Team, "Apollo 16 sample documentation." May 1972. USGS. (Astrogeology 49) 48 pp.			Loan Only - LSI Data Center	
Apollo Lunar Geology Investigation Team, "Documentation and environment of the Apollo 16 samples; a preliminary report." May 1972. USGS. (Astrogeology 51) 256 pp.	NTIS	N72-28824	Photocopy Microfiche	8.50 2.25
Apollo Lunar Geology Investigation Team, "Preliminary Report on the geology and field petrology at the Apollo 16 landing site." April 1972. USGS. (Astrogeology 48). 59 pp.			Loan Only - LSI Data Center	
Bailey, N.G., Ulrich, G.E., "Apollo 16 voice transcript pertaining to the geology of the landing site." 1975. USGS. 310 pp.	NTIS	PB243870	Photocopy Microfiche	9.50 2.25
Keil, K., et al. "Description, classi- fication, and inventory of Apollo 16 rake samples from the LM area and station 5." Oct. 1972. NASA/ Manned Spacecraft Center. 166 pp.			Loan Only - LSI Data Center	
Lunar Sample Information Catalog, Apollo 16. July 1972. NASA/Manned Space- craft Center. 372 pp. (MSC 03210)	NSSDC		Microform	*
Marvin, U.B., "Apollo 16 coarse fines (4-10mm); sample classification, description and inventory." Oct. 1972. NASA/Manned Spacecraft Center. 141 pp.			Loan Only - LSI Data Center	
Phinney, W., Lofgren, G., "Description, classification, and inventory of Apollo 16 Rake samples from stations 1, 4, and 13." May 1973. NASA/Johnson Space Center. 69 pp.			Loan Only - LSI Data Center	
Smith, J.V., Steele, I.M., "Apollo 16 rake samples 67515 to 68537 sample classification, description and inventory." Sept. 1972. NASA/ Manned Spacecraft Center. 124 pp.			Loan Only - LSI Data Center	

*For availability and price information, contact NSSDC

Source	Order No.	Media	Price
--------	-----------	-------	-------

APOLLO 16 MISSION (continued)Maps

Apollo 16 traverses; lunar photomap. Scale 1:25,000. 1975.	NASA/ SL	Sheet 78D2S2(25) edition 1	
Milton, D.G., Hodges, C.A., "Geologic maps of the Descartes region of the Moon. 1972. USGS. 1 sheet and description.	USGS	I-748	\$ 1.00

Photography

Data users' note: Apollo 16 lunar photog- raphy. May 1973. NSSDC. 47 pp.	NSSDC	73-01	*
Apollo 16 photography; 70mm, 35mm, 16mm, and 5 in. frame index. May 1973. NSSDC.	NSSDC	Order by title	Microform *
Apollo 16 panoramic and metric photog- raphy index. May 1973. NSSDC.	NSSDC	Order by title	Microform *
Apollo mission 16 lunar photography index. Oct. 1972. NSSDC. 6 map sheets.	NSSDC	Order by title	*

APOLLO 17 MISSIONGeneral Information

Apollo 17 Preliminary Science Report. 1973. NASA SP-330. 710 pp.	GPO	NAS1.21:330	Original	\$ 7.95
	NTIS	N74-18428	Photocopy	19.75
			Microfiche	2.25

Geology and Sample

Apollo Field Geology Investigation Team, "Apollo 17 landing site geology." June 1975. USGS. 435 pp. and 7 fold- outs. (Astrogeology 73; supercedes nos. 70 and 71)	Loan Only - LSI Data Center			
Apollo Lunar Geology Investigation Team. "Preliminary geologic analysis of the Apollo 17 site." March 1973. USGS. 211 pp. (Astrogeology 72)	IN NASA SP-330	Apollo 17 Preliminary Science Report		
Apollo Lunar Geology Investigation Team, Preliminary report on the geology and field petrology of the Apollo 17 landing site." Dec. 1972. USGS. 62 pp and 5 fold-outs. (Astrogeology 69)	Loan Only - LSI Data Center			

*For availability and price information, contact NSSDC

	Source	Order No.	Media	Price
<u>APOLLO 17 MISSION</u> (continued)				
<u>Geology and Sample</u> (continued)				
Bailey, N.G., Ulrich, G.E., "Apollo 17 voice transcript pertaining to the geology of the landing site." 1975. USGS. 361 pp.	NTIS	PB244,493/AS N76-15971	Photocopy Microfiche	\$10.50 2.25
Consortium Indomitabile, "Interdisciplinary studies of samples from boulder 1, station 2, Apollo 17." Pt. 1. Jan. 1974. Smithsonian Astrophysical Observatory. 191 pp.	LSI NTIS	LSI C-210D N74-20505	Microfiche Photocopy Microfiche	Free \$12.75 2.25
Consortium Indomitabile, "Interdisciplinary studies of samples from boulder 1, station 2, Apollo 17." Pt. 2. Nov. 1974. Smithsonian Astrophysical Observatory. 159 pp.	LSI	LSI C-211D	Microfiche	Free
Heiken, G.H., et al., "Preliminary data on boulders at station 6, Apollo 17 landing site. Oct. 1973. NASA/Johnson Space Center. 56 pp. (NASA TM X-58116 or JSC-08484)	NTIS	N74-10781	Photocopy Microfiche	\$ 4.25 2.25
Keil, K., et al., "Description, classification and inventory of 113 Apollo 17 rake samples from stations 1A, 2, 7, and 8." April 1974. NASA/Johnson Space Center. 149 pp.	Loan Only - LSI Data Center			
Lunar sample information catalog, Apollo 17. April 1973. NASA/Johnson Space Center. 447 pp. (MSC 03211)	NSSDC		Microform	*
Meyer, C., Jr., "Apollo 17 coarse fines (4-10mm); sample location, classification and photo index. June 1973. NASA/Johnson Space Center. 182 pp.	Loan only - LSI Data Center			
Phinney, W., et al., "Description, classification and inventory of Apollo 17 rake samples from station 6. Sept. 1974. NASA/Johnson Space Center. 46 pp.	Loan Only - LSI Data Center			
<u>Maps</u>				
Apollo 17 traverses; lunar photomap. Scale 1:25,000. 1975.	NASA/SL	Sheet 43D1S2(25) edition 1		
Scott, D.H., et al., "Geologic maps of the Taurus-Littrow region of the Moon. 1972. USGS. 1 sheet and description.	USGS	I-800		\$ 1.00

*For availability and price information, contact NSSDC

	Source	Order No.	Media	Price
<u>APOLLO 17 MISSION (continued)</u>				
<u>Photography</u>				
Data users' note; Apollo 17 lunar photography. Dec. 1974. NSSDC. 59 pp.	NSSDC	74-08		*
Apollo 17 photography; 70mm, 35mm, 16mm, and 5 in. frame index. June 1974. NSSDC.	NSSDC		Microform	*
Apollo 17 panoramic and metric photography index. June 1974. NSSDC.	NSSDC		Microform	*
Apollo mission 17 lunar photography index. Nov. 1973. NSSDC. (8 map sheets)	NSSDC			*

GEOPHYSICAL EXPERIMENTS

The surface (ALSEP) and orbital scientific experiments which were conducted during the Apollo program are outlined in the Apollo Scientific Experiments Data Handbook. This handbook contains a brief description along with the operational history, the data content and format, and the availability of the data. For information regarding the availability of this document contact LSI Data Center.

Lauderdale, W.W., Eichelman, W.F., "Apollo scientific experiments data handbook." 1974. NASA TM-X-58131. 898 pp.	NTIS	N75-71672	Photocopy No fiche	\$15.25
--	------	-----------	-----------------------	---------

SUMMARY OF THE APOLLO PROGRAM

[Synopsis of the Apollo Program Activities and Technology for Lunar Exploration]. Apollo Program Summary Report. 1975. NASA TM-X-68725. 502 pp. Includes all program activities and technology summarizing the flights conducted over an 11-year period; lunar science, spacecraft technology; biomedical data, etc.	NTIS	N75-21314	Photocopy Microfiche	\$12.25 2.25
Apollo Expeditions to the Moon "A dazzling color book about the entire 15-year Apollo space program written by 18 key members of the team."	GPO	NAS1.21:350		\$ 8.90

*For availability and price information, contact NSSDC

CONFERENCE PUBLICATIONS

Conference publications include the abstracts and proceedings of the Annual Lunar Science Conference held each spring in Houston, Texas, and proceedings, abstracts, and reports of topical conferences which are held throughout the year.

ANNUAL LUNAR SCIENCE CONFERENCE

The results of the Lunar Science Conference are published in two series: the Abstracts and the Proceedings. The Abstracts have been published by the Lunar Science Institute, since the Third conference held in 1972. The Proceedings volumes are published or distributed by Pergamon Press. Special prices are available to individuals. Contact the Symposia Office, LSI.

<u>Abstracts</u>	<u>Source</u>	<u>Media</u>	<u>Price</u>
Lunar Science III; abstracts of papers submitted to the Third Lunar Science Conference. 1972. 723 pp.	LSI	Copy	\$ 1.00 U.S. 6.00 Foreign
Lunar Science IV; abstracts of papers submitted to the Fourth Lunar Science Conference. 1973. 848 pp.	LSI	Copy	1.00 U.S. 6.00 Foreign
Lunar Science V; abstracts of papers submitted to the Fifth Lunar Science Conference. 1974. 900 pp.	LSI	Copy	1.00 U.S. 6.00 Foreign
Lunar Science VI; abstracts of papers submitted to the Sixth Lunar Science Conference. 1975. 933 pp.	LSI	Copy	1.00 U.S. 6.00 Foreign
Lunar Science VII; abstracts of papers submitted to the Seventh Lunar Science Conference. 1975. 1008 pp.	LSI	Copy	1.00 U.S. 6.00 Foreign
<u>Proceedings</u>			
PROCEEDINGS OF THE APOLLO 11 LUNAR SCIENCE CONFERENCE (1st). Edited by A.A. Levinson. N.Y., Pergamon Press, 1970. (Geochimica et Cosmochimica Acta Supplement 1). 3 volumes. 2492 pp.	Pergamon	Paper	\$ 60.00
		Microfiche	39.00
		Microfilm	32.50
PROCEEDINGS OF THE SECOND LUNAR SCIENCE CONFERENCE. Edited by A.A. Levinson. Cambridge, MA, MIT Press, 1971. (Geochimica et Cosmochimica Acta Supplement 2). 3 volumes. 2818 pp.	Pergamon	Paper	60.00
		Microfiche	36.00
		Microfilm	30.00
PROCEEDINGS OF THE THIRD LUNAR SCIENCE CONFERENCE. Edited by E.A. King, D. Heymann, D.R. Criswell. Cambridge, MA, MIT Press, 1972. (Geochimica et Cosmochimica Supplement 3). 3 volumes. 3263 pp.	Pergamon	Paper	75.00
		Microfiche	45.00
		Microfilm	37.50

PROCEEDINGS OF THE FOURTH LUNAR SCIENCE CONFERENCE. Edited by W.A. Gose. N.Y., Pergamon Press, 1973. (Geochimica et Cosmochimica Acta Supplement 4). 3 volumes. 3290 pp.	Pergamon	Paper Microfiche Microfilm	100.00 60.00 50.00
PROCEEDINGS OF THE FIFTH LUNAR SCIENCE CONFERENCE. Edited by W.A. Gose. N.Y., Pergamon Press, 1974. (Geochimica et Cosmochimica Acta Supplement 5) 3 volumes. 3134 pp.	Pergamon	Paper Microfiche Microfilm	100.00 60.00 50.00
PROCEEDINGS OF THE SIXTH LUNAR SCIENCE CONFERENCE. Edited by R.B. Merrill. N.Y., Pergamon Press, 1975. (Geochimica et Cosmochimica Acta Supplement 6). 3 volumes. 3637 pp.	Pergamon	Paper Microfiche Microfilm	130.00 78.00 65.00
PROCEEDINGS OF THE SEVENTH LUNAR SCIENCE CONFERENCE. Edited by R.B. Merrill. N.Y., Pergamon Press, 1976. (Geochimica et Cosmochimica Acta Supplement 7).	Pergamon	Paper	150.00

TOPICAL CONFERENCES (Chronologically)

The papers presented at the topical, problem-oriented conferences are generally published in journals and as reprints in the LUNAR SCIENCE INSTITUTE CONTRIBUTIONS series. A limited number of reprint volumes are available for distribution from the LSI unless it is indicated that the Contribution is "out-of-print."

	<u>Source or Journal</u>	<u>Media</u>	<u>Price</u>
Meteorite Impact and Volcanism, Houston, TX, Oct. 19-23, 1970. Edited by F. Horz.	Journal of Geophysical Research <u>76</u> , 5381-5798 (1971)		
Conference on Space Biology, Houston, TX, Oct. 11-12, 1971. Edited by J.D. Weete. LSI Contribution No. 87 (out-of-print)	Space Life Sciences <u>4</u> , 3-138 (1973)		
Conference on Lunar Geophysics, Houston, TX, Oct. 18-21, 1971. Edited by Z. Kopal and D.W. Strangway. LSI Contribution No. 86 (out-of-print)	The Moon <u>4</u> , 3-249; 271-504; <u>5</u> , 3-160 (1972)		
Conference on High Pressure Physics and Planetary Interiors, Houston, TX, March 1-3, 1972. Edited by S.K. Runcorn. LSI Contribution No. 89 (out-of-print)	Physics of the Earth and Planetary Interiors <u>6</u> , 1-209 (1972). Elsevier/Excerpta Medica P.O. Box 211 Amsterdam, The Netherlands		\$17.50
Post-Apollo Lunar Science--A report of a summer study. 1972. 104 pp.	LSI		Free

- Conference on Lunar Dynamics and Observational Coordinate Systems, Houston, TX, Jan. 15-17, 1973. Edited by M. Moutsoulas. LSI Contribution No. 175. The Moon 8, 433-556 (1973)
- Urey Symposium on the Moon, Houston, TX, April 30-May 2, 1973. Papers dedicated to Dr. H.C. Urey on the occasion of his 80th birthday. The Moon 7, 1-504; 8, 1-430 (1973)
- Lunar Petrology Conference, Houston, TX, July 24-26, 1973. Conference summary edited by W.I. Ridley, A.M. Reid, P.R. Brett. LSI Contribution No. 156. EOS: Transactions of the AGU 55, 4-8 (1974)
- Lunar Interactions; Abstracts of papers presented at the Conference on Interactions of the Interplanetary Plasma with the Modern and Ancient Moon, Lake Geneva, WI, Sept. 30-Oct. 3, 1974. Edited by D.R. Criswell and J.W. Freeman. LSI Contribution No. 195. 142 pp. LSI C-195 NTIS N74-34277 Photocopy 5.75 Microfiche 2.25 \$10.00
- Conference on Interactions of the Interplanetary Plasma with the Modern and Ancient Moon, Lake Geneva, WI, Sept. 30-Oct. 3, 1974. Proceedings. LSI Contribution No. 212. The Moon 14, 1-207 (1975) LSI OR D. Reidel Pub. Co. P.O. Box 17 Dordrecht, Holland \$18.00
- Origin and evolution of the lunar regolith; Houston, TX, Nov. 13-15, 1974. LSI Contribution No. 207. The Moon 13, 1-359 (1975) LSI OR D. Reidel Pub. Co. \$50.00
- Origins of Mare Basalts and their implications for lunar evolution; papers presented to the conference, Houston, TX, Nov. 17-19, 1975. LSI Contribution No. 234. 205 pp. LSI 1.00 U.S. 6.00 Foreign

LUNAR AND PLANETARY PUBLICATIONS

This list of publications is arranged by planet, subdivided into categories: General Information, Geology and Sample Information, Maps, and Photography. All of the publications are available on loan to qualified requestors from the LSI Data Center.

	<u>Source</u>	<u>Order No.</u>	<u>Media</u>	<u>Price</u>
<u>EARTH</u>				
<u>General Information</u>				
Colwell, R.N., et al., "Monitoring earth resources from aircraft and spacecraft." 1971. NASA SP-275. 203 pp.	GPO NTIS	NAS1.21:275 N72-18331	Original Photocopy Microfiche	\$ 4.00 7.25 2.25
<u>Photography</u>				
Earth photographs from Gemini III, IV, and V. 1967. NASA SP-129. 262 pp. (N67-26641)	GPO	NAS1.21:129	Original	\$ 7.00
Earth photographs from Gemini 6 through 12. 1968. NASA SP-171. 335 pp.	GPO NTIS	NAS1.21:171 N69-28909	Original Photocopy Microfiche	8.00 9.50 2.25
Nicks, O.W., ed., "This island Earth." 1970. NASA SP-250. 192 pp.	GPO NTIS	NAS1.21:250 N71-12566	Original Photocopy Microfiche	6.00 7.00 2.25

JUPITERGeneral Information

Fimmel, R.O., Swindell, W., Burgess, E., "Pioneer Odyssey; encounter with a giant." 1974. NASA SP-349. 183 pp.	GPO NTIS	NAS1.21:349 N75-10130	Original Photocopy Microfiche	\$ 5.50 7.00 2.25
Michaux, D.M., "Handbook of the physical properties of the planet Jupiter." 1967. NASA SP-3031. 142 pp.	NTIS	N67-26559	Photocopy Microfiche	5.75 2.25

Photography

Requests for Pioneer 10 photos of Jupiter should be directed to NASA/Ames Research Center. The queries should be specific concerning the intended use of the materials. Planetariums can also arrange loans of a Planetarium Package which includes a script, slides, and audio tape, but plan ahead; there is a waiting list. If NASA/Ames cannot supply the needed material due to the size or type of request, a price list for the official photo reproduction service will be sent to the requestor.

NASA/Ames Research Center
Public Affairs Office
Moffett Field, CA 94035

	Source	Order No.	Media	Price
<u>MARS</u>				
Corliss, W.R., "Viking Mission to Mars. 1974. NASA SP-334. 77 pp.	GPO	NAS1.21:334	Original	1.20
Glasstone, S., "Book of Mars." 1968. NASA SP-179. 315 pp.	GPO	NAS1.21:179	Original	5.70
	NTIS	N69-16571	Photocopy	9.25
			Microfiche	2.25
Mariner-Mars 1969; a preliminary report 1969. NASA SP-225. 145 pp.	NTIS	N70-18343	Photocopy	5.75
			Microfiche	2.25
Michaux, C.M., "Handbook of the physical properties of the planet Mars." 1967. NASA SP-3030. 167 pp.	NTIS	N67-35182	Photocopy	6.25
			Microfiche	2.25
<u>Maps</u>				
Mariner 9 Mars globe. 1974. 16" globe with wooden cradle. Chicago, Denoyer Geppert, 5235 Ravenswood Ave., Chicago, IL 60640.	Denoyer	407141-64	globe	72.50
Red planet Mars. 1973. National Geographic Society, Washington, DC 20036	NATL	Order by title	Paper	2.00
	GEO		Plastic-coat	3.00
Shaded relief map of Mars. 1975. USGS	USGS	I-940		1.25
U.S. Geological Survey Atlas of Mars. See page 24 for list of maps available at time of preparation of this publication. Maps are being constantly added to the series. Contact USGS or the LSI photo/map librarian for additional information.				
<u>Photography</u>				
Collins, S.A., "Mariner 6 and 7 pictures of Mars." 1971. NASA SP-263.	GPO	NAS1.21:263	Original	\$ 4.25
	NTIS	N73-13878	Photocopy	6.25
			Microfiche	2.25
Data announcement bulletin: Mariner 9 TV picture data. 1974. NSSDC.	NSSDC	73-03	Copy	Free
Hartmann, W.K., Raper, O., "The new Mars: the discoveries of Mariner 9." 1974. NASA SP-337. 192 pp.	GPO	NAS1.21:337	Original	8.75
	NTIS	N75-13729	Photocopy	7.00
			Microfiche	2.25
Mars as viewed by Mariner 9. 1974. NASA SP-329. 279 pp.	GPO	NAS1.21:329	Original	8.15
	NTIS	N75-17270	Photocopy	8.75
			Microfiche	2.25

	<u>Source Order No.</u>	<u>Media</u>	<u>Price</u>
<u>MARS (Continued)</u>			
<u>Photography (continued)</u>			
Selected set of 40 Mariner 9 photos.	PIC		15.00
Selected set of Viking photos	PIC		varies with format
<u>MERCURY</u>			
<u>Maps</u>			
Reference mosaic of Mercury. 1974. USGS.	USGS I-903		\$ 1.00
<u>Photography</u>			
Data announcement bulletin: Mariner 10 photography. 1975. NSSDC	NSSDC 75-18		Free
Selected set of 15 Mercury frames	PIC		Varies w/format
<u>MOON</u>			
<u>General Information</u>			
Both, E.E., "A History of Lunar Studies" Buffalo Museum of Science, 1960-61 (concise compilation of the early mapping and photography of the Moon)	Astronomical Endeavors Pub. Co. Dept. D, 18 Fairhaven Dr. Buffalo, NY 14225		1.25
<u>Geology and Sample Information</u>			
Duke, M.B., Nagle, J.S., "Lunar core catalog." 1974. NASA/Johnson Space Center. c.200 pp. (JSC-09252)	Loan only - LSI Data Center		
Greeley, R., Schultz, P.H., "Primer in lunar geology." 1974. NASA TM X-62359. 546 pp.	NTIS N75-13730	Photocopy Microfiche	\$12.50 2.25
Heiken, G.H., "Catalog of lunar soils." 1974. NASA/Johnson Space Center. 221 pp.	Loan only -LSI Data Center		
Simonds, C.H., Heiken, J.H., Waranius, F.B., "Short guide to lunar sample information." 1974. LSI. 14 pp.	LSI LSI C-200	Copy	Free

	Source	Order No.	Media	Price
--	--------	-----------	-------	-------

MOON (Continued)Maps

Geologic atlas of the Moon. USGS.
Series of maps based on the LAC
areas of the Moon. See page 23
for list of maps currently
available.

Kinsler, D.C., "User guide to 1:250,000
scale lunar maps. 1975. LSI. 24 pp.

LSI	C-206	Copy	Free
-----	-------	------	------

1:250,000 lunar photobase maps.
For information about these maps,
see Kinsler, D.C., LSI C-206

NASA/ SL

Wilhelms, D.E., McCauley, J.F.,
"Geologic map of the near side of
the Moon." 1971. USGS.

USGS	I-703		1.00
------	-------	--	------

Several special scale lunar maps have
been prepared. For information
contact

NASA/ SL

Photography

Bowker, D.E., Hughes, J.H., "Lunar
orbiter photographic atlas of
the Moon." 1971. NASA SP-206.
723 pp.

GPO	NAS1.21:206	Original	23.90
NTIS	N73-13879	Photocopy	19.75
		Microfiche	2.25

Batson, R.M., Jordan, R., Larson, K.B.,
"Atlas of Surveyor 5 television
data." 1974. NASA SP-341. 609 pp.

GPO	NAS1.21:341	Original	14.40
NTIS	N75-14665	Photocopy	17.75
		Microfiche	2.25

Gutschewski, G.L., Kinsler, D.C.,
Whitaker, E., "Atlas and gazeteer
of the near side of the Moon."
1971. NASA SP-241. 539 pp.
(N72-18820)

GPO	NAS1.21:241	Original	15.00
-----	-------------	----------	-------

Hansen, T.P., "Guide to lunar orbiter
photographs. 1970. NASA SP-242
125 pp.

GPO	NAS1.21:242	Original	7.00
NTIS	N71-36179	Photocopy	5.25

Kosofsky, L.J., El-Baz, F., "Moon as
viewed by lunar orbiter. 1970.
NASA SP-200. 156 pp.

NTIS	N70-30717	Photocopy	6.25
		Microfiche	2.25

Lipskiy, Y., et al., "Atlas of the
reverse side of the Moon, part 2."
1969. NASA TT F-514. 286 pp.

NTIS	N69-24206	Photocopy	8.75
		Microfiche	2.25

	<u>Source Order No.</u>	<u>Media</u>	<u>Price</u>
--	-------------------------	--------------	--------------

MOON (Continued)Photography (continued)

Musgrove, R.B., comp. "Lunar photographs from Apollos 8, 10, and 11." 1971. NASA SP-246. 24 pp. (N71-29260)	GPO NTIS	NAS1.21:246	Original	4.00
---	-------------	-------------	----------	------

SATURNGeneral Information

Palluconi, F.D., Pettengill, G.H., ed. "Rings of Saturn." 1974. NASA SP-343. 221 pp.	GPO	NAS1.21:343	Original	\$ 3.25
	NTIS	N75-17236	Photocopy	7.25
			Microfiche	2.25

VENUSGeneral Information

Koenig, L.R., et al., "Handbook of the physical properties of the planet Venus." 1967. NASA SP-3029. 132 pp.	GPO	NAS1.21:3029	Original	\$ 0.60
	NTIS	N67-31439	Photocopy	5.75
			Microfiche	2.25
Mariner Venus 1967: Final project report. 1971. NASA SP-190. 301 pp.	GPO	NAS1.21:190	Original	3.00
		N72-20809	Photocopy	11.25
			Microfiche	2.25

Photography

Data announcement bulletin: Mariner 10 (photography). 1975. NSSDC	NSSDC	75-18		Free
Selected set of 5 Venus pictures	PIC			Varies w/format

OF GENERAL INTEREST

Cortright, E.M., ed. and comp. "Exploring space with a camera." 1968. NASA SP-168. 227 pp.	GPO	NAS1.21:168	Original	\$ 4.25
	NTIS	N68-34870	Photocopy	7.50
			No fiche	

SELECTED CURRENT BOOK-LIST

These books can be obtained through any book-seller or by contacting the publisher. Copies are also available for loan or review at the Lunar Science Institute Library.

Frondel, Judith, Lunar mineralogy, N.Y., John Wiley, 1975. 323 pp. \$18.95

King, Elbert A., Jr., Space geology: an introduction. N.Y., John Wiley, 1976. 368 pp. \$16.95

Lindsay, John F., Lunar stratigraphy and sedimentology. N.Y., American-Elsevier, 1976. 302 pp. \$28.95

Mutch, Thomas A., Geology of the Moon; a stratigraphic view, revised edition. Princeton, N.Y., Princeton University Press, 1973. 391 pp. \$25.00

Mutch, Thomas A., Raymond E. Arvidson, Kenneth L. Jones, James W. Head III, and R. Stephen Saunders. Geology of Mars. Princeton, N.J., Princeton University Press, 1976. 400 pp. \$35.00

Schultz, Peter H., Lunar morphology. Austin, TX, University of Texas Press, 1976. 626 pp. \$35.00

Short, Nicholas, Planetary geology. N.Y., Prentice-Hall, 1975. 361 pp. \$17.95

The solar system; a scientific American book. San Francisco, CA, W. H. Freeman, 1976. 150 pp. \$8.50 hard cover; \$4.50 paperback. (Reprint of September 1975 issue of Scientific American)

Taylor, Stuart Ross, Lunar science: a post-Apollo view. N.Y., Pergamon Press, 1975. 372 pp. \$18.50 hard cover; \$9.50 paperback.

U. S. GEOLOGICAL SURVEY GEOLOGIC ATLAS OF THE MOON

MAP NO.	REGION NAME	MAP NO.	REGION NAME
I-355	KEPLER	I-678	BONPLAND PQC
I-385	LETRONNE	I-679	SABINE EB
I-458	RIPHAEUS MOUNTAINS	I-690	RUPES ALTAI
I-462	TIMOCHARIS	I-691	SCHILLER
I-463	MONTES APENNINUS	I-693	BONPLAND H
I-465	ARISTARCHUS	I-694	RHEITA
I-485	PITATUS	I-695	MAUROLYCUS
I-489	MARE SERENITATIS	I-701	PLATO
I-491	HEVELIUS	I-702	HOMMEL
I-495	MARE HUMORUM	I-703	NEAR SIDE OF MOON
I-510	JULIUS CAESAR	I-705	EUDOXUS
I-515	COPERNICUS	I-706	CLAVIUS
I-527	SELEUCUS	I-707	CLEOMEDES
I-546	THEOPHILUS	I-708	FRA MAURO (APOLLO 14)
I-548	MARE VAPORUM	I-713	TYCHO
I-566	PTOLEMAEUS	I-714	COLOMBO
I-586	ALPHONSUS GA	I-720	FRACASTORIUS
I-594	SABINE DM	I-722	TARUNTIUS
I-599	ALPHONSUS	I-723	APENNINE-HADLEY (APOLLO 15)
I-602	SINUS IRIDUM	I-725	ARISTOTELES
I-604	J. HERSCHEL	I-739	LANGRENUS
I-616	MASKELYNE DA	I-740	GRIMALDI
I-617	APOLLO SITE I	I-748	DESCARTES (APOLLO 16)
I-618	SABINE D	I-755	BYRGIUS
I-619	APOLLO SITE II (APOLLO 11)	I-794	PETAVIUS
I-620	OPPOLZER A	I-799	MACROBIUS
I-621	APOLLO SITES 3 & 3R	I-800	TAURUS-LITTROW (APOLLO 17)
I-622	MAESTLIN G	I-805	RÜMKER
I-623	APOLLO SITE 5	I-811	CENSORINUS
I-624	WICHMANN CA	I-822	PURBACH
I-625	APOLLO SITES 4 & 4R	I-823	SHICKARD
I-626	FLAMSTEED K	I-824	WILHELM
I-627	LANSBERG P (APOLLO 12)	I-837	MARE UNRARUM
I-666	CASSINI	I-840	CRATER COPERNICUS
		I-841	GEMINUS

U. S. GEOLOGICAL SURVEY ATLAS OF MARS

Geologic Series

I- 893 THARSIS
 I- 894 LUNAE PALUS
 I- 895 OXIA PALUS

Topographic Series

I- 961 MARS
 I- 967 SYRTIS MAJOR
 I- 971 LUNAE PALUS
 I- 975 MARGARITIFER SINUS
 I- 976 COPRATES
 I- 977 THARSIS
 I- 978 OXIA PALUS
 I- 979 MARE ACIDALIUM
 I- 983 CHRYSE
 I- 984 PHOENICIS LACUS
 I- 985 ARGYRE
 I- 988 CYDONIA
 I-1001 AEOLIS

Cartographic Atlas of Mars

I- 923 ARGYRE
 I- 924 PHOENICIS LACUS
 I- 925 LUNAE PALUS
 I- 926 THARSIS
 I- 927 MARGARITIFER SINUS
 I- 928 COPRATES
 I- 929 SYRTIS MAJOR
 I- 939 CHRYSE
 I- 940 MARS
 I- 946 CYDONIA
 I- 947 ERYTHRAEUM
 I- 955 OXIA PALUS
 I- 956 AMAZONIS
 I- 957 NEREIDUM MONTES
 I- 958 MARE ACIDALIUM
 I- 963 ARCADIA
 I-1000 AEOLIS

High Resolution Mariner 9 Pictures

I- 990 CYDONIA
 I- 991 CHRYSE