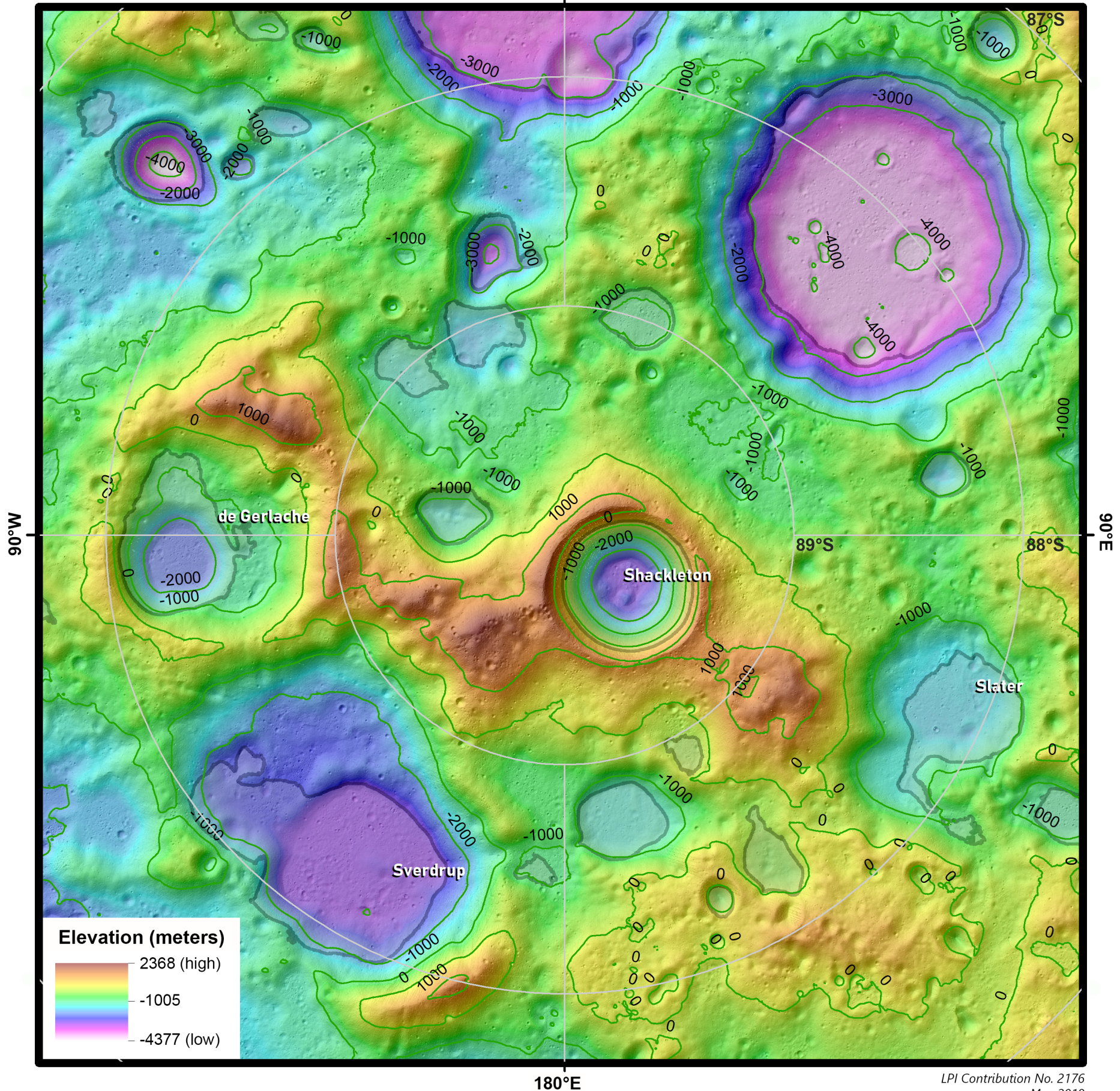


# Topography and Permanently Shaded Regions (PSRs) 87°S to Pole of the Moon

Polarstereographic Projection (scale true at pole)

Scale: 1:600,000

0°E



180°E

LPI Contribution No. 2176

May 2019

## Data sources:

Lunar Reconnaissance Orbiter Lunar Orbiter Laser Altimeter (LOLA) 5-m elevation product [NASA Goddard Space Flight Center (GSFC)] over derived hillshade with solar azimuth 45°W and solar elevation 45°; 1000-m elevation contours (relative to global radius; green lines); shapefile of digitized LOLA large PSRs (gray outlines) [NASA GSFC; Arizona State University]



**Regional Planetary Image Facility**  
Lunar and Planetary Institute  
Houston, Texas, USA